

NHSN Outpatient Dialysis COVID-19 Vaccination Module: Groups and Supergroups - Viewing and Uploading COVID-19 Vaccination Reporting Pathway .CSV Data Files

Description

As part of CDC's ongoing COVID-19 response, outpatient dialysis facilities enrolled in the National Healthcare Safety Network (NHSN) can report data using the Outpatient Dialysis COVID-19 Vaccination Module. Group and supergroup users can import patient COVID-19 vaccination data on behalf of their member facilities who report to this module. The purpose of this guidance document is to provide important information and instructions for how groups and supergroups can import .CSV files and view summary data in the NHSN Outpatient Dialysis COVID-19 Vaccination Module.

Facilities can be members of several groups in NHSN. These groups can view facility data. Therefore, facilities should decide which group can import .CSV files. If data have been uploaded into NHSN for a facility by one group or supergroup via the .CSV bulk upload, these data can be overwritten by a second group uploading data for the facility at a later time or date. Therefore, NHSN recommends that facilities only grant access to one group/supergroup to upload data on their behalf. Groups or Supergroups can include health departments. It is also important to note that if a facility has entered its own data, it will not be overwritten by a bulk upload by a group/supergroup.

Facilities looking to upload their data by working directly with a vendor will need to work with the vendor directly to provide their OrgID and establish the process. Vendors (e.g., EHR providers, EOC providers, etc.) intending to provide COVID-19 .CSV uploads on behalf of NHSN facilities should submit an inquiry to NHSN@cdc.gov with the title "Vendor Support for NHSN COVID-19 Outpatient Dialysis Facility Reporting." NHSN will follow up to confirm procedural details as the process may differ by vendor.

Please note: If accessing NHSN through different level of SAMS credentials, the interface will look slightly different as shown below but all functionality related to COVID-19 data reporting are the same.

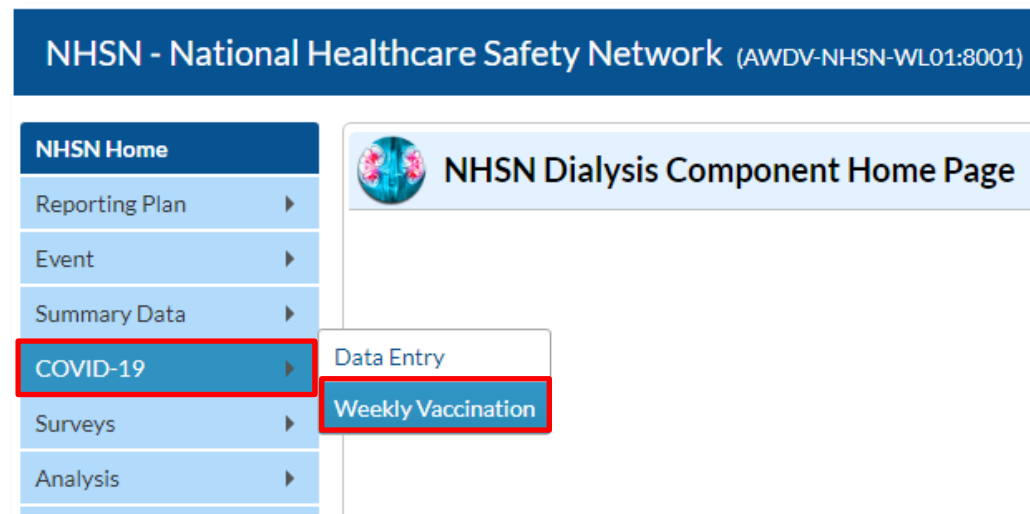


Instructions for Groups and Supergroups: Defining and Conferring Rights

Please refer to the document, "**How to Join a Group and Accept the Confer Rights Template**" – available for download from the Dialysis COVID-19 Module webpage: <https://www.cdc.gov/nhsn/pdfs/covid19/dialysis/confer-rights-508.pdf>.

Instructions to Upload and Export .CSV Files for both Group and Supergroup Users

1. **Group/Super Group** – Select “COVID-19” from the menu bar to view specific pathway data. Next, select “Weekly Vaccination”.



A list of facilities in your group or supergroup that have entered vaccination data by month will be displayed. Select the Facility ID/Month to view the data for that month. (All data in screenshots are for illustration only.)

Page 1 of 1 View 1 - 4 of 4

Facility ID	Facility Name	Month	Year
10055	Dialysis Test Facility 2	February	2021
10055	Dialysis Test Facility 2	March	2021
10055	Dialysis Test Facility 2	April	2021
10055	Dialysis Test Facility 2	May	2021

Page 1 of 1 View 1 - 4 of 4

[Upload CSV...](#)



COVID-19 Vaccine

Details	orgid	survweekstart	survweekend	vacctype	numpat	na
	10055	02/03/2021	02/09/2021	COVID19	100	
	10055	02/10/2021	02/16/2021	COVID19	100	
	10055	02/17/2021	02/23/2021	COVID19	100	

[Back](#)

2. **Download Template** – The .CSV template for COVID-19 Weekly Vaccination Summary Data for dialysis patients is available for download from the NHSN Weekly Patient COVID-19 Vaccination webpage: <https://www.cdc.gov/nhsn/dialysis/pt-covid-vac/index.html>. Please note, this template only includes variables applicable for NHSN version 9.5.4 and forward.

Data Collection Forms and Instructions

All Data Collection Forms are Print-only

- [Weekly COVID-19 Vaccination Summary Form for Patients of Dialysis Facilities \(57.509\) – May 2021](#) [PDF – 100 KB]
 - [Table of Instructions](#) [PDF – 300 KB]

Supporting Materials



- [Data Tracking Worksheet for COVID-19 Vaccination among Patients – April 2021](#) [XLSM – 700 KB]
- [Uploading Group Dialysis COVID-19 .CSV Data Files – March 2021](#) [PDF – 800 KB]
- [.CSV File Template for Dialysis COVID-19 Vaccination Data – May 2021](#) [CSV – 1 KB]
 - [Example CSV File – Weekly COVID-19 Vaccination for Dialysis Patients – May 2021](#) [XLS – 1 KB]
- [Weekly COVID-19 Vaccination Data Reporting Guidance – March 2021](#) [PDF – 300 KB]

3. **Enter Data** – Using the .CSV template provided, populate each variable with the appropriate data. Multiple facilities (those that are a part of the group and have conferred rights) may be included. A valid facility identifier is required. Save the file to upload the .CSV file in NHSN.





For complete information on the variables included on the .CSV template, refer to the table at end of this document (“NHSN Dialysis Patient COVID-19 Vaccination Data Import File Format”). An example .CSV file that includes test data in required fields is available from NHSN’s Weekly Patient COVID-19 Vaccination webpage: <https://www.cdc.gov/nhsn/dialysis/pt-covid-vac/index.html>.

Data Collection Forms and Instructions

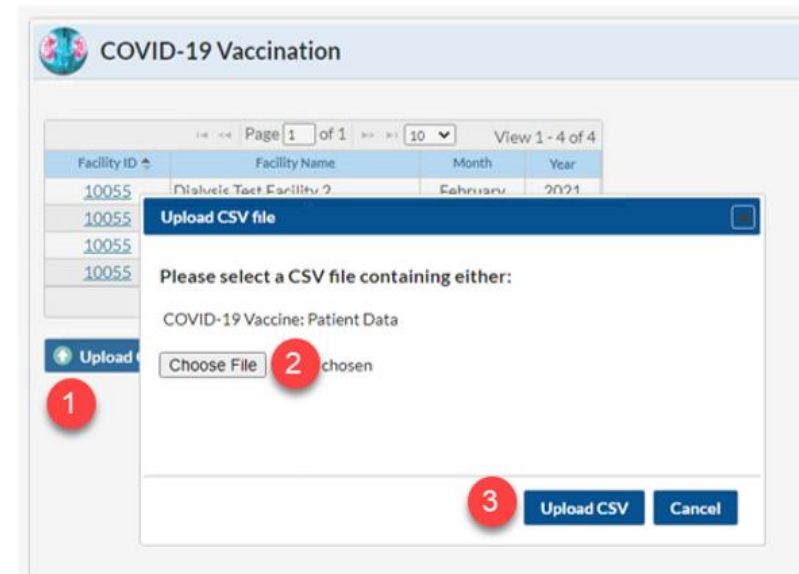
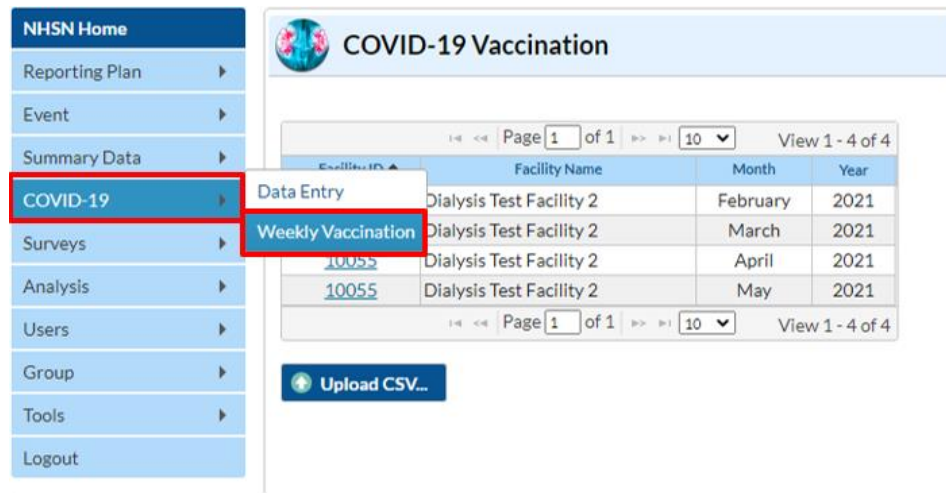
All Data Collection Forms are Print-only

- [Weekly COVID-19 Vaccination Summary Form for Patients of Dialysis Facilities \(57.509\) – May 2021](#)  [PDF – 100 KB]
 - [Table of Instructions](#)  [PDF – 300 KB]

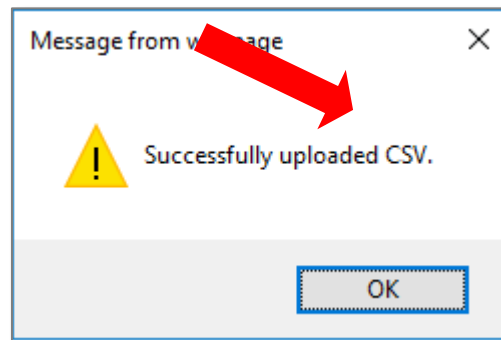
Supporting Materials

- [Data Tracking Worksheet for COVID-19 Vaccination among Patients – April 2021](#) [XLSM – 700 KB]
- [Uploading Group Dialysis COVID-19 .CSV Data Files – March 2021](#)  [PDF – 800 KB]
- [.CSV File Template for Dialysis COVID-19 Vaccination Data – May 2021](#)  [CSV – 1 KB]
 - [Example CSV File – Weekly COVID-19 Vaccination for Dialysis Patients – May 2021](#)  [XLS – 1 KB]
- [Weekly COVID-19 Vaccination Data Reporting Guidance – March 2021](#)  [PDF – 300 KB]

4. **Upload .CSV** – To upload the completed .CSV file in NHSN, select COVID-19 from the menu bar. Next, select “Weekly Vaccination”. A list of facilities by month will be displayed. Click on the “Upload CSV” button. A screen will appear where a file must be provided for submission. Browse for the file and then click “Upload CSV” to begin the import.



5. **View Data** – A message that indicates the upload was successful will be generated. The Vaccination Module will automatically populate the uploaded data. Users can then select a facility for which data were added to view the record.



If errors are found during upload, please review the alerts and refer to the table at end of this document (“Table 1: NHSN Dialysis Patient COVID-19 Vaccination Data Import File Format”) for complete information on the variables included on .CSV templates. Questions can be submitted to NHSN@CDC.GOV with “Weekly COVID-19 Reporting CSV upload” in the subject line.

6. **View and Export Line List Data Reports** – Users are encouraged to utilize the analysis and reporting functionality built within NHSN to view and export line list data reports for COVID-19 vaccination data for dialysis patients.

Group - Importing via .csv file - *COVID-19 Weekly Vaccination Summary – Patients - Dialysis Component* - NHSN release **9.5.5.4** (August 2021)

Table 1: NHSN Dialysis Patient COVID-19 Vaccination Data Import File Format

Field	Requirement	Values	Format†	Description of Field
orgid	Required	–	–	Must be a valid NHSN Facility ID (organization identifier)
survweekstart	Required	MM/DD/YYYY (Wednesday through Tuesday reporting)	–	Week of data collection, start date (date must be a Wednesday; must be no later than current date)
survweekend	Required	MM/DD/YYYY (Wednesday through Tuesday reporting)	–	Week of data collection, end date (date must be a Tuesday; must be no later than current date)
vacctype	Required	COVID19	–	Vaccination Type

Field	Requirement	Values	Format [†]	Description of Field
numpat	Required	<p>0 – 500</p> <p>Must be ≤ 500 and \geq sum of (numInCentPat + numHomePat) and \geq sum of (numPatVacc[0] + numPatVacc[1] + numPatVacc[2] + numPatVacc[3] + numPatVacc[4] + numPatVacc[5] + numPatVacc[6] ... numPatVacc[7] + numPatMed + numPatDec + numPatUnk)</p> <p>Note: the sum of numPatVacc[0] through numPatVacc[5] = the variable numPatVacc. NumPatVacc is auto-calculated on import</p>	Must be a whole number	Number of All Patients receiving dialysis care from this facility during the current reporting week

Field	Requirement	Values	Format [†]	Description of Field
numincentpat	Optional	0 – 500 If entered, must be <= numPat If both numInCentPat and numHomePat entered, the sum should = numPat.	Must be a whole number	Number of In-Center Dialysis Patients receiving dialysis care from this facility during the current reporting week
numhomepat	Optional	0 – 500 If entered, must be <= numPat If both numInCentPat and numHomePat entered, the sum should = numPat.	Must be a whole number	Number of Home Dialysis Patients receiving dialysis care from this facility during the current reporting week
numpatmed	Required	0 – 500 Must be <= numpat	Must be a whole number	Cumulative number of All Patients from NumPat with a medical contraindication or exclusion to COVID-19 vaccine and did not receive COVID-19 vaccine
numincentpatmed	Optional	0 – 500 Must be <= numInCentPat	Must be a whole number	Cumulative number of In-Center Dialysis Patients from NumincentPat with a medical contraindication or exclusion to COVID-19 vaccine and did not receive COVID-19 vaccine
numhomepatmed	Optional	0 – 500 Must be <= numHomePat	Must be a whole number	Cumulative number of Home Dialysis Patients from NumhomePat with a medical contraindication or exclusion to COVID-19 vaccine and did not receive COVID-19 vaccine
numpatdec	Optional	0 – 500 Must be <= numpat	Must be a whole number	Cumulative number of All Patients who were offered but declined COVID-19 vaccine

Field	Requirement	Values	Format [†]	Description of Field
numincentpatdec	Optional	0 – 500 Must be <= numInCentPat	Must be a whole number	Cumulative number of In-Center Dialysis Patients who were offered but declined COVID-19 vaccine
numhomepatdec	Optional	0 – 500 Must be <= numHomePat	Must be a whole number	Cumulative number of Home Dialysis Patients who were offered but declined COVID-19 vaccine
numpatunk	Optional	0 – 500 Must be <= numpat	Must be a whole number	Cumulative number of All Patients who have an unknown COVID-19 vaccine status
numincentpatunk	Optional	0 – 500 Must be <= numInCentPat	Must be a whole number	Cumulative number of In-Center Dialysis who have an unknown COVID-19 vaccine status
numhomepatunk	Optional	0 – 500 Must be <= numHomePat	Must be a whole number	Cumulative number of Home Dialysis Patients who have an unknown COVID-19 vaccine status
vaccprovider	Required	Y for Yes N for No	—	Is your facility enrolled as a COVID-19 vaccination provider?
vaccsuffsupply	Conditionally Required Required if vaccProvider = Y	Y for Yes N for No	—	Did your facility have a sufficient supply of COVID-19 vaccine(s) to offer all patients the opportunity to receive COVID-19 vaccine(s) from your facility in the current reporting week?
vaccOthSuffSupply	Conditionally Required Required if vaccProvider = N or vaccSuffSupply = N	Y for Yes N for No	—	Did your facility have other arrangements sufficient to offer all patients the opportunity to receive COVID-19 vaccine(s) in the current reporting week?

Field	Requirement	Values	Format [†]	Description of Field
vaccsupplyissue	Optional	—	Alpha numeric up to 200 characters	Describe any other COVID-19 vaccination supply-related issue(s) at your facility
vacC19VOs[0].covid19vaccinename	Conditionally Required Required if reporting Pfizer-BioNTech COVID-19 vaccine	PFIZBION	—	COVID-19 Vaccine Name (PFIZBION – Pfizer-BioNTech COVID-19 vaccine)
vacC19VOs[0].covid19vaccine	Conditionally Required Required if reporting Pfizer-BioNTech COVID-19 vaccine	PFIZBION1	—	COVID-19 Vaccine – PFIZBION1 (only dose 1 of Pfizer-BioNTech COVID-19 vaccine)
vacC19VOs[0].numpatvacc	Conditionally Required Required if reporting Pfizer-BioNTech COVID-19 vaccine	0 -500 Must be <= numpat	Must be a whole number	Cumulative number of patients, from numpat, who have received only dose 1 of Pfizer-BioNTech COVID-19 vaccine at this facility or elsewhere
vacC19VOs[0].numincentpatvacc	Optional	0 – 500 If both numInCentPatVacc and numHomePatVacc entered, the sum should = numPatVacc.	Must be a whole number	Cumulative number of In-Center Dialysis, from numpat, who have received only dose 1 of Pfizer-BioNTech COVID-19 vaccine at this facility or elsewhere

Field	Requirement	Values	Format [†]	Description of Field
vacC19VOs[0].numhomepatvacc	Optional	0 - 500 If both numInCentPatVacc and numHomePatVacc entered, the sum should = numPatVacc.	Must be a whole number	Cumulative number of Home Dialysis Patients, from numpat, who have received only dose 1 of Pfizer-BioNTech COVID-19 vaccine at this facility or elsewhere
vacC19VOs[1].covid19vaccinename	Conditionally Required Required if reporting Pfizer-BioNTech COVID-19 vaccine	PFIZBION	—	COVID-19 Vaccine Name (PFIZBION – Pfizer-BioNTech COVID-19 vaccine)
vacC19VOs[1].covid19vaccine	Conditionally Required Required if reporting Pfizer-BioNTech COVID-19 vaccine	PFIZBION	—	COVID-19 Vaccine - PFIZBION (dose 1 and dose 2 of Pfizer-BioNTech COVID-19 vaccine)
vacC19VOs[1]. numpatvacc	Conditionally Required Required if reporting Pfizer-BioNTech COVID-19 vaccine	0 – 500 Must be <= numpat	—	Cumulative number of patients, from numpat, who have received dose 1 and dose 2 of Pfizer-BioNTech COVID-19 vaccine at this facility or elsewhere

Field	Requirement	Values	Format [†]	Description of Field
vacC19VOs[1].numincentpatvacc	Optional	0 – 500 If both numInCentPatVacc and numHomePatVacc entered, the sum should = numPatVacc.	–	Cumulative number of In-Center Dialysis Patients, from numpat, who have received dose 1 and dose 2 of Pfizer-BioNTech COVID-19 vaccine at this facility or elsewhere
vacC19VOs[1].numhomepatvacc	Optional	0 – 500 If both numInCentPatVacc and numHomePatVacc entered, the sum should = numPatVacc.	–	Cumulative number of Home Dialysis Patients, from numpat, who have received dose 1 and dose 2 of Pfizer-BioNTech COVID-19 vaccine at this facility or elsewhere
vacC19VOs[2].covid19vaccinename	Conditionally Required Required if reporting Moderna COVID-19 vaccine	MODERNA	–	COVID-19 Vaccine Name (MODERNA COVID-19 vaccine)
vacC19VOs[2].covid19vaccine	Conditionally Required Required if reporting Moderna COVID-19 vaccine	MODERNA1	–	COVID-19 Vaccine (MODERNA1 – only dose one of MODERNA COVID-19 vaccine)
vacC19VOs[2]. numpatvacc	Conditionally Required Required if reporting Moderna COVID-19 vaccine	0 – 500 Must be <= numpat	–	Cumulative number of patients, from numpat, who have received only dose one of MODERNA COVID-19 vaccine at this facility or elsewhere

Field	Requirement	Values	Format [†]	Description of Field
vacC19VOs[2].numincentpatvacc	Optional	0 – 500 If both numInCentPatVacc and numHomePatVacc entered, the sum should = numPatVacc.	—	Cumulative number of In-Center Dialysis Patients, from numpat, who have received only dose one of MODERNA COVID-19 vaccine at this facility or elsewhere
vacC19VOs[2].numhomepatvacc	Optional	0 – 500 If both numInCentPatVacc and numHomePatVacc entered, the sum should = numPatVacc.	—	Cumulative number of Home Dialysis Patients, from numpat, who have received only dose one of MODERNA COVID-19 vaccine at this facility or elsewhere
vacC19VOs[3].covid19vaccinename	Conditionally Required Required if reporting Moderna COVID-19 vaccine	MODERNA	Must be a whole number	COVID-19 Vaccine Name (MODERNA COVID-19 vaccine)
vacC19VOs[3].covid19vaccine	Conditionally Required Required if reporting Moderna COVID-19 vaccine	MODERNA	Must be a whole number	COVID-19 Vaccine (MODERNA – dose 1 and dose 2 of MODERNA COVID-19 vaccine)
vacC19VOs[3]. numpatvacc	Conditionally Required Required if reporting Moderna COVID-19 vaccine	0 – 500 Must be <= numpat	Must be a whole number	Cumulative number of patients, from numpat, who have received dose 1 and dose 2 of MODERNA COVID-19 vaccine at this facility or elsewhere

NHSN Outpatient Dialysis COVID-19 Vaccination Module: Groups and Supergroups-
Viewing and Uploading COVID-19 Vaccination Reporting Pathway .CSV Data Files

August 2021

Field	Requirement	Values	Format [†]	Description of Field
vacC19VOs[3].numincentpatvacc	Optional	0 – 500 If both numInCentPatVacc and numHomePatVacc entered, the sum should = numPatVacc.	Must be a whole number	Cumulative number of In-Center Dialysis Patients, from numpat, who have received dose 1 and dose 2 of MODERNA COVID-19 vaccine at this facility or elsewhere
vacC19VOs[3].numhomepatvacc	Optional	0 – 500 If both numInCentPatVacc and numHomePatVacc entered, the sum should = numPatVacc.	Must be a whole number	Cumulative number of Home Dialysis Patients, from numpat, who have received dose 1 and dose 2 of MODERNA COVID-19 vaccine at this facility or elsewhere
vacC19VOs[4].covid19vaccinename <i>Note: JANSSEN can be reported starting 3/3/2021 and going forward</i>	Conditionally Required Required if reporting Janssen COVID-19 vaccine	JANSSEN	–	COVID-19 Vaccine Name (JANSSEN –Janssen COVID-19 vaccine)
vacC19VOs[4].covid19vaccine <i>Note: JANSSEN can be reported starting 3/3/2021 and going forward</i>	Conditionally Required Required if reporting Janssen COVID-19 vaccine	JANSSEN	–	COVID-19 Vaccine (JANSSEN – one dose of Janssen COVID-19 vaccine)
vacC19VOs[4]. numpatvacc	Conditionally Required Required if reporting Janssen COVID-19 vaccine	0 – 500 Must be <= numpat	Must be a whole number	Cumulative number of patients, from numpat, who have received one dose of JANSSEN COVID-19 vaccine at this facility or elsewhere

Field	Requirement	Values	Format [†]	Description of Field
vacC19VOs[4].numincentpatvacc	Optional	0 – 500 If both numInCentPatVacc and numHomePatVacc entered, the sum should = numPatVacc.	Must be a whole number	Cumulative number of In-Center Dialysis Patients, from numpat, who have received one dose of JANSSEN COVID-19 vaccine at this facility or elsewhere
vacC19VOs[4].numhomepatvacc	Optional	0 – 500 If both numInCentPatVacc and numHomePatVacc entered, the sum should = numPatVacc.	Must be a whole number	Cumulative number of Home Dialysis Patients, from numpat, who have received one dose of JANSSEN COVID-19 vaccine at this facility or elsewhere
vacC19VOs[5].covid19vaccinename <i>Note: UNSPECIFIED can be reported starting 3/3/2021 and going forward</i>	Conditionally Required Required if reporting COVID-19 vaccine of unspecified manufacturer	UNSPECIFIED	–	COVID-19 Vaccine Name (UNSPECIFIED –COVID-19 vaccine series: unspecified manufacturer)
vacC19VOs[5].covid19vaccine <i>Note: UNSPECIFIED can be reported starting 3/3/2021 and going forward</i>	Conditionally Required Required if reporting COVID-19 vaccine of unspecified manufacturer	UNSPECIFIED	–	COVID-19 Vaccine (UNSPECIFIED – complete COVID-19 vaccine series: unspecified manufacturer)

Field	Requirement	Values	Format [†]	Description of Field
vacC19VOs[5].numpatvacc	Conditionally Required Required if reporting COVID-19 vaccine of unspecified manufacturer	0 – 500 Must be <= numpat	Must be a whole number	Cumulative number of patients, from numpat, who have received a complete COVID-19 vaccine series: unspecified manufacturer at this facility or elsewhere
vacC19VOs[5].numincentpatvacc	Optional	0 – 500 If both numInCentPatVacc and numHomePatVacc entered, the sum should = numPatVacc.	Must be a whole number	Cumulative number of In-Center Dialysis Patients, from numpat, who have received a complete COVID-19 vaccine series: unspecified manufacturer at this facility or elsewhere
vacC19VOs[5].numhomepatvacc	Optional	0 – 500 If both numInCentPatVacc and numHomePatVacc entered, the sum should = numPatVacc.	Must be a whole number	Cumulative number of Home Dialysis Patients, from numpat, who have received a complete COVID-19 vaccine series: unspecified manufacturer at this facility or elsewhere
numPatEligAddtlDose	Required	Must be <= numPat	Must be a whole number	Cumulative number of all patients who have received a completed series of COVID-19 vaccine and are eligible to receive an additional dose or booster or booster of COVID-19 vaccine Must be less than or equal to the total number of All Dialysis Patients that received a <i>complete</i> a COVID-19 vaccine series <u>AND</u> must be greater than or equal the total number of All Dialysis Patients who received an additional dose or booster of COVID-19 vaccine

NHSN Outpatient Dialysis COVID-19 Vaccination Module: Groups and Supergroups-
Viewing and Uploading COVID-19 Vaccination Reporting Pathway .CSV Data Files

August 2021

Field	Requirement	Values	Format [†]	Description of Field
numInCentPatEligAddtlDose	Optional	Must be <= numInCentPat	Must be a whole number	<p>Cumulative number of In-Center Dialysis Patients who have received a completed series of COVID-19 vaccine and are eligible to receive an additional dose or booster of COVID-19 vaccine</p> <p>Must be less than or equal to the total number of In-Center Dialysis Patients that received a complete a COVID-19 vaccine series <u>AND</u> must be greater than or equal the total number of In-Center Dialysis Patients who received an additional dose or booster of COVID-19 vaccine</p>
numHomePatEligAddtlDose	Optional	Must be <= numHomePat	Must be a whole number	<p>Cumulative number of Home Dialysis Patients who have received a completed series of COVID-19 vaccine and are eligible to receive an additional dose or booster of COVID-19 vaccine</p> <p>Must be less than or equal to the total number of Home Dialysis Patients that received a <i>complete</i> a COVID-19 vaccine series <u>AND</u> must be greater than or equal the total number of Home Dialysis Patients who received an additional dose or booster of COVID-19 vaccine</p>
vacC19VOs[6].covid19vaccinename	<p>Conditionally Required</p> <p>Required if reporting additional dose or booster of Pfizer-BioNTech COVID-19 vaccine</p>	PFIZBION	—	COVID-19 Vaccine Name (PFIZBION – Pfizer-BioNTech COVID-19 vaccine)

Field	Requirement	Values	Format [†]	Description of Field
vacC19VOs[6].covid19vaccine	Conditionally Required Required if reporting additional dose or booster of Pfizer-BioNTech COVID-19 vaccine	PFIZBION3	—	COVID-19 Vaccine - PFIZBION (additional dose or booster of Pfizer-BioNTech COVID-19 vaccine)
vacC19VOs[6].numpatvacc	Conditionally Required Required if reporting additional dose or booster of Pfizer-BioNTech COVID-19 vaccine	—	Must be a whole number	Cumulative number of all eligible patients, from numPatEligAddtlDose, who have received an additional dose or booster of Pfizer-BioNTech COVID-19 vaccine at this facility or elsewhere
vacC19VOs[6].numincentpatvacc	Optional	—	Must be a whole number	Cumulative number of eligible In-Center Dialysis Patients, from numInCentPatEligAddtlDose, who have received an additional dose or booster of Pfizer-BioNTech COVID-19 vaccine at this facility or elsewhere
vacC19VOs[6].numhomepatvacc	Optional	—	Must be a whole number	Cumulative number of eligible Home Dialysis Patients, from numHomePatEligAddtlDose, who have received an additional dose or booster of Pfizer-BioNTech COVID-19 vaccine at this facility or elsewhere
vacC19VOs[7].covid19vaccineName	Conditionally Required Required if reporting additional dose or booster of Moderna COVID-19 vaccine	MODERNA	—	COVID-19 Vaccine Name (MODERNA COVID-19 vaccine)

Field	Requirement	Values	Format [†]	Description of Field
vacC19VOs[7].covid19vaccine	Conditionally Required Required if reporting additional dose or booster of Moderna COVID-19 vaccine	MODERNA3	—	COVID-19 Vaccine (MODERNA – additional dose or booster of MODERNA COVID-19 vaccine)
vacC19VOs[7].numpatvacc	Conditionally Required Required if reporting additional dose or booster of Moderna COVID-19 vaccine	—	Must be a whole number	Cumulative number of all eligible patients, from numPatEligAddtlDose, who have received an additional dose or booster of Moderna COVID-19 vaccine at this facility or elsewhere
vacC19VOs[7].numincentpatvacc	Optional	—	Must be a whole number	Cumulative number of eligible In-Center Dialysis Patients, from numInCentPatEligAddtlDose, who have received an additional dose or booster of Moderna COVID-19 vaccine at this facility or elsewhere
vacC19VOs[7].numhomepatvacc	Optional	—	Must be a whole number	Cumulative number of eligible Home Dialysis Patients, from numHomePatEligAddtlDose, who have received an additional dose or booster of Moderna COVID-19 vaccine at this facility or elsewhere
vacC19VOs[8].covid19vaccinename	Conditionally Required Required if reporting additional dose or booster of Janssen COVID-19 vaccine	JANSSEN	—	COVID-19 Vaccine Name (JANSSEN COVID-19 vaccine)

Field	Requirement	Values	Format [†]	Description of Field
vacC19VOs[8].covid19vaccine	Conditionally Required Required if reporting additional dose or booster of Janssen COVID-19 vaccine	JANSSEN2	—	COVID-19 Vaccine (JANSSEN – additional dose or booster of JANSSEN COVID-19 vaccine)
vacC19VOs[8].numpatvacc	Conditionally Required Required if reporting additional dose or booster of Janssen COVID-19 vaccine	—	Must be a whole number	Cumulative number of all eligible patients, from numPatEligAddtlDose, who have received an additional dose or booster of Janssen COVID-19 vaccine at this facility or elsewhere
vacC19VOs[8].numincentpatvacc	Optional	—	Must be a whole number	Cumulative number of eligible In-Center Dialysis Patients, from numInCentPatEligAddtlDose, who have received an additional dose or booster of Janssen COVID-19 vaccine at this facility or elsewhere
vacC19VOs[8].numhomepatvacc	Optional	—	Must be a whole number	Cumulative number of eligible Home Dialysis Patients, from numHomePatEligAddtlDose, who have received an additional dose or booster of Janssen COVID-19 vaccine at this facility or elsewhere
vacC19VOs[9].covid19vaccinename	Conditionally Required Required if reporting additional dose or booster of COVID-19 vaccine of unspecified manufacturer	UNSPECIFIED	—	COVID-19 Vaccine Name (UNSPECIFIED - unspecified manufacturer)

Field	Requirement	Values	Format [†]	Description of Field
vacC19VOs[9].covid19vaccine	Conditionally Required Required if reporting additional dose or booster of COVID-19 vaccine of unspecified manufacturer	UNSPECIFIED2	—	COVID-19 Vaccine (UNSPECIFIED – additional dose or booster of COVID-19 vaccine series: unspecified manufacturer)
vacC19VOs[9].numpatvacc	Conditionally Required Required if reporting additional dose or booster of COVID-19 vaccine of unspecified manufacturer	—	Must be a whole number	Cumulative number of all eligible patients, from numPatEligAddtlDose, who have received an additional dose or booster of COVID-19 vaccine: unspecified manufacturer at this facility or elsewhere
vacC19VOs[9].numincentpatvacc	Optional	—	Must be a whole number	Cumulative number of eligible In-Center Dialysis Patients, from numInCentPatEligAddtlDose, who have received an additional dose or booster of COVID-19 vaccine: unspecified manufacturer at this facility or elsewhere
vacC19VOs[9].numhomepatvacc	Optional	—	Must be a whole number	Cumulative number of eligible Home Dialysis Patients, from numHomePatEligAddtlDose, who have received an additional dose or booster of COVID-19 vaccine: unspecified manufacturer at this facility or elsewhere